
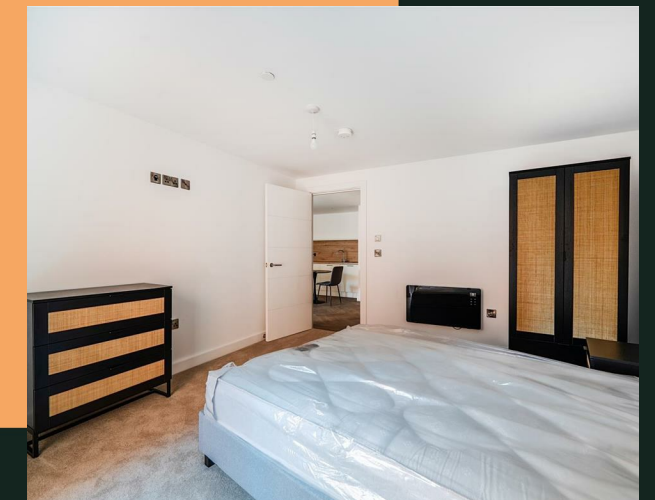
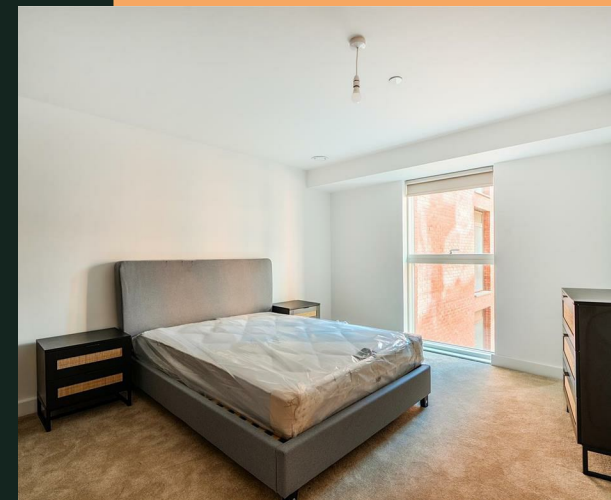


# Upper Gough Street, B1

PROPERTY ADDRESS  
 Apartment 35  
 56 Upper Gough Street  
 Birmingham  
 B1 1GF

Energy Efficiency Rating		Current	Potential
<i>Very energy efficient - lower running costs</i>			
(92 plus) <b>A</b>		91	91
(81-91) <b>B</b>			
(69-80) <b>C</b>			
(55-68) <b>D</b>			
(39-54) <b>E</b>			
(21-38) <b>F</b>			
(1-20) <b>G</b>			
<i>Not energy efficient - higher running costs</i>			
<b>England &amp; Wales</b>		EU Directive 2002/91/EC 	



Call Us  
 01215162222

Email Us  
 solihull@vision-properties.co.uk

**vision**

We look at  
 estate agency  
 differently.

**vision**

- Total cost of first month: £2,476.92 (rent & deposit)
- Available now
- Furnished
- Brand new
- Communal roof garden and courtyards

Be the first to rent this stunning new build apartment in a prime city centre location.

The property comes furnished and benefits from high spec fixtures and fittings throughout.

It briefly comprises of a bright and airy open plan living, dining and kitchen area with stylish integrated appliances, a spacious double bedroom and modern bathroom.

Residents have access to the communal lounge, two attractive internal courtyards and a rooftop garden with fantastic city scape views. The development also benefits from a lift and secure video-entry phone system.

Chapmans Yard is located right in the heart of Birmingham city centre, with everything you need on the doorstep, including the Mailbox, the Cube, Centenary Square, Grand Central and New Street stations.

Available immediately subject to acceptable references.

Rent: £1,150 per calendar month  
Holding deposit: £265.38  
Deposit: £1,326.92



Your Text Here

